

**SWING CHUTE
SAND/SALT SPREADER**

**INSTALLATION AND
OPERATING INSTRUCTIONS**

SWING CHUTE SPREADER MODELS: 7, 8, 9, 9.5 & 10'

MANUAL FOR SPREADER SERIAL NUMBERS AFTER # 20000



**It don't mean a thing
If it ain't got the swing**

Replacement Parts are available through
The Leading Parts LLC
413-243-0048

SAFETY PROCEDURES

Read this manual and spreader labels before using the spreader. To avoid serious injury to yourself and others, follow all warnings.

Identify conditions or actions where equipment damage could occur.

Observe the following safety procedures before and during the use of the spreader. By following these rules and applying common sense, possible injury and potential damage to the machine may be avoided.

WARNINGS

- ❖ Check that all safety guards are in place before operating the spreader.
- ❖ Check that all personnel are clear of the spreader spray area before starting the spreader.
- ❖ Secure all loose fitting clothing and unrestrained hair before working on spreader.
- ❖ Stop the spreader before leaving the vehicle to unclog, adjust, oil or clean the spreader.
- ❖ Wait for all movement to stop before servicing the spreader.
- ❖ Keep hands, feet, and clothing away from power-driven parts.
- ❖ Do not climb on or let others climb on the spreader.

CAUTIONS

- ❖ Do not operate spreader in need of maintenance.
- ❖ Before operating the spreader, reassemble any parts or hardware removed for cleaning or adjustments.
- ❖ Before operating the spreader remove materials such as cleaning rags, brushes and hand tools from spreader.
- ❖ Use auxiliary warning lights, except when prohibited by law, when operating the spreader.

GENERAL INFORMATION

WARNING


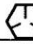

- ❖ Check the vehicle's load rating certification sticker for the maximum vehicle capacity, and DO NOT overload beyond the vehicle GVWR or GAWR. Overloading could result in an accident or damage to the vehicle.

Use the following tables to calculate the vehicle payload whenever you place material in the spreader.

Model	Body Length	Overall Length	Lbs. Weight Empty	Capacity Struck Cubic Yards	Width (Hopper)	Height (Hopper)	Height (Overall)	Recommended Uses:
PS6510MS	6 1/2'	96"	740	1.0	51"	24"	29"	1/2 Ton Trucks & Larger
PS6510SS	6 1/2'	96"	580	1.0	51"	24"	29"	1/2 Ton Trucks & Larger
PS0814MS	8'	114"	740	1.4	48"	22"	27"	3/4 Ton Trucks & Larger
PS0814SS	8'	114"	640	1.4	48"	22"	27"	3/4 Ton Trucks & Larger
TS0927MS	9'	126"	780	2.7	48"	28"	34"	1 Ton Trucks & Larger
TS0927SS	9'	126"	760	2.7	48"	28"	34"	1 Ton Trucks & Larger
TS1030MS	10'	138"	810	3.0	48"	28"	34"	1 Ton Trucks & Larger
TS1030SS	10'	138"	790	3.0	48"	28"	34"	1 Ton Trucks & Larger

Torque Chart

Recommended Fastener Torque

Size	SAE	SAE	SAE
	Grade 2	Grade 5	Grade 8
			
1/4 - 20	6	9	13
5/16 - 18	11	18	28
3/8 - 16	19	31	46
3/8 - 24	24	46	68
7/16 - 14	30	50	75
1/2 - 13	45	75	115
9/16 - 12	66	110	165
5/8 - 11	93	150	225
Metric Grade 8.8 (Ft.-Lbs.)			
Size	Torque		
M 6	7		
M 8	17		
M 12	60		
M 14	95		

NOTE: To help prevent a frozen conveyor chain, empty the spreader when not in use.

Material Weights

Material	Weight (lbs. per cubic yd.)
# 1 Rock Salt	950
# 2 Rock Salt	1,215
Coarse Sand - Dry	2,565
Coarse Sand - Wet	3,240

These torque values apply to mount assembly fasteners except those noted in the instruction.

INSTALLATION INSTRUCTIONS

Mounting the Spreader onto the Vehicle

1. Remove the tailgate from the truck.
2. Lift the spreader by hooking through the loop on the spreader located on the rear cross channel which is inside the hopper. The loop is located at the approximate balance point of the spreader. The balance point may vary with engine fluid levels, battery, top screen or any residual material in the hopper.

WARNING: Before lifting, check that the hopper is empty of material. The lifting device must be capable of supporting the spreader's weight. Refer to column "lbs. weight empty" from chart on previous page.

3. Place lengths of lumber under the ribs of the spreader. By elevating the spreader off the vehicle, it is easier to remove excess material that accumulates under the spreader. Center the spreader on the vehicle with the end of the rails 14" to the rear of the nearest vertical obstruction (i.e. bumper, trailer hitch, etc.).
4. Bolt the spreader to the vehicle frame using the holes located at each lower support leg. Use ½" hardware as required by vehicle application.
5. Using the tie down chains or ratchet tie downs, secure the spreader to the vehicle using the tabs located at the corners of the spreader and the vehicles factory installed anchor points.

NOTE: Check the mounting devices periodically through the snow and ice season to make sure they are secure.

Spreader Battery

1. Install a 12-volt gel type battery (with a minimum of 180 cold cranking amps rating) into the engine compartment area inside engine cover.
2. Connect the red battery cable coming from the solenoid to the positive terminal of the battery. Attach one end of the black battery cable to the left front bolt on engine mount and the other end to the negative (ground) terminal of the battery.

Chute and Spinner Assembly

1. Install chute assembly by guiding hinge pin (on top of chute) into front hinge pin hole on left side of spreader.
2. Slide chute assembly forward approximately 2 ½”.
3. Align and guide rear chute hinge pin into rear hinge pin hole on left side of spreader.
4. Slide entire chute assembly to rear.
5. Insert safety pin (hanging on small chain from frame of hopper) into rear of hinge pin.
6. Swing chute assembly toward the right side of spreader.
7. Raise chute to engage spinner shaft hex male coupler end into female hex drive coupler. Turn spinner 1/8 turn or until couplers engage. Couplers are spring loaded and will snap together when aligned properly.
8. Connect safety latch on right side of chute with bracket on spreader frame. Pull handle down to lock in place.
9. Reverse procedure to remove chute assembly.

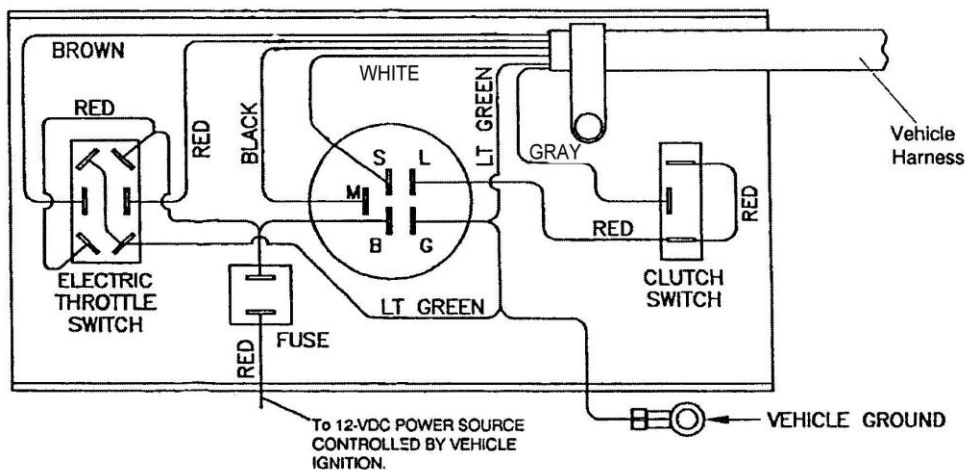
To hang chute on left side of spreader while unloading aggregate follow these steps.

1. Release lock handle on right side of spreader.
2. Leave safety hinge pin in place on left side and swing chute to left and up.
3. Attach chute to chain and hook attached to spreader lift eye to clip on front side of chute assembly. **DO NOT REMOVE SAFETY PIN IN HINGE.**

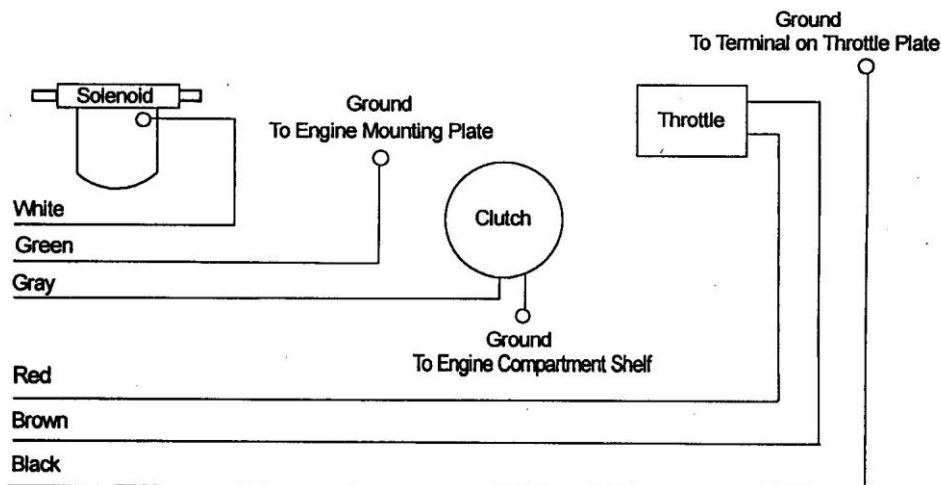
Control Panel Bracket and 6-Wire Harness Installation

1. Select a suitable location on the cab floor for the spreader control panel. Due to the variety of possible in-cab locations, a mounting bracket is included.
2. Select a routing for the 25' 6-wire harness avoiding any hot or moving parts of the truck.
3. Drill a 1 1/4" hole where the wiring harness will exit the cab.
4. Connect hopper wiring harness to cab wiring harness.

Cab Control Wiring Diagram



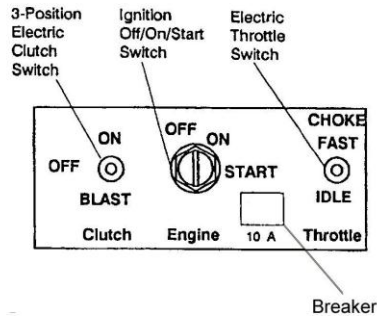
Engine Wiring Diagram



NOTE: The cab control wiring must be protected from abrasion and cutting from sharp edges during installation and operation. Tape, grommets, etc. should be used.

OPERATION

Cab Control Panel Identification



Cab Control – Electric Throttle

NOTE: The conveyor and spinner will operate when the clutch switch is in the “ON” or the “BLAST” position.

Starting the Engine

Electric Throttle Spreaders

1. Turn the vehicle ignition to “ON”.
2. Verify that the clutch switch is “OFF”.
3. Turn the spreader ignition to “ON”. (Labeled “Engine” on the Cab Control.)
4. Move the throttle switch to “IDLE” and hold for two seconds; release.
5. Turn the ignition switch to “START”.
6. While the engine is cranking, move the throttle switch to “CHOKE/FAST”.
7. Release the throttle switch when the engine starts to fire.
8. Release the ignition switch when the engine starts. If the engine does not start after 10 seconds of cranking, turn both ignition switches to “OFF” and see the Briggs & Stratton Owner’s Manual, which is shipped with the spreader.
9. After the engine starts, move the throttle switch to “IDLE” for ½ to 1 second to release the choke.
10. To control the engine speed:
 - To increase the engine speed, hold the throttle switch at “CHOKE/FAST”.
 - To decrease the engine speed, hold the throttle switch to “IDLE”.

NOTE: Maximum engine speed is obtained just prior to choking the engine.

Stopping the Engine

Turn the spreader ignition switch to “OFF”.

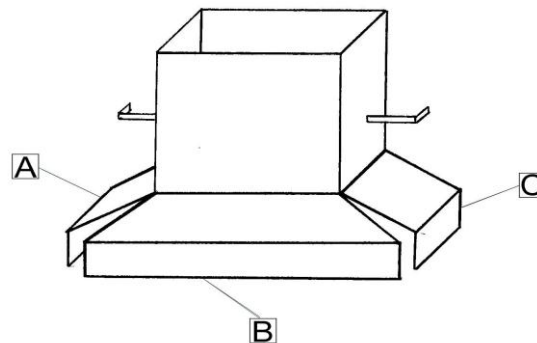
Clutch Operation

1. Start the engine and adjust the speed slightly above "IDLE".
2. Move the clutch switch to "ON".
3. Increase the engine speed to the desired RPM.

Observe the following recommendations:

- ❖ The electric clutch can be engaged or disengaged at any time, and at any engine RPM. However, since engagement time and thus torque are almost instantaneous, it is recommended that the electric clutch be engaged at the lowest possible RPM without stopping the engine. This will prevent premature spinner chain failure and chain tension loss.
- ❖ To prevent a frozen conveyor chain, empty the spreader when not in use.
- ❖ If the conveyor chain becomes "stuck" or "frozen", remove the material from the hopper and free the chain, or move the spreader to a warm area to thaw the material.
- ❖ Do not attempt to free the chain by using a pipe wrench or any other tool on the output shaft of the gear case. The gear case is designed to accept torque from the input shaft only. Attempts to turn the output shaft will strip the gears and void any warranty.

External Baffle Adjustment



Confined Space Spread Pattern

Adjust all external baffles A, B, and C to the lowest position.

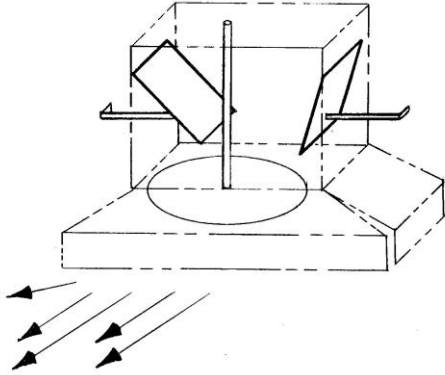
Heavy on Left Side Spread Pattern

Adjust external baffles A and B upward.
Adjust right external baffle C downward.

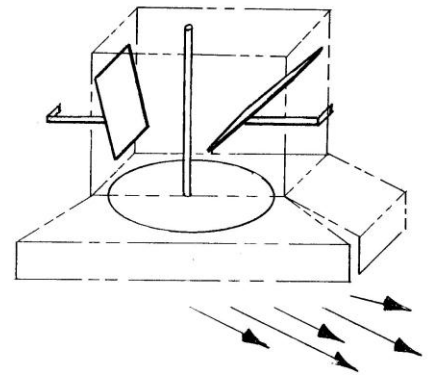
Heavy on Right Side Spread Pattern

Adjust left external baffle A downward.
Adjust external baffles B and C upward.

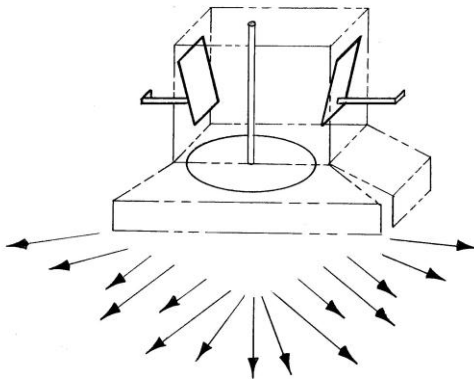
Internal Baffle Adjustment



For Wider Spread to the Left
Adjust left internal baffle inward
Adjust right internal baffle outward



For Wider Spread to the Right
Adjust left internal baffle outward
Adjust right internal baffle inward



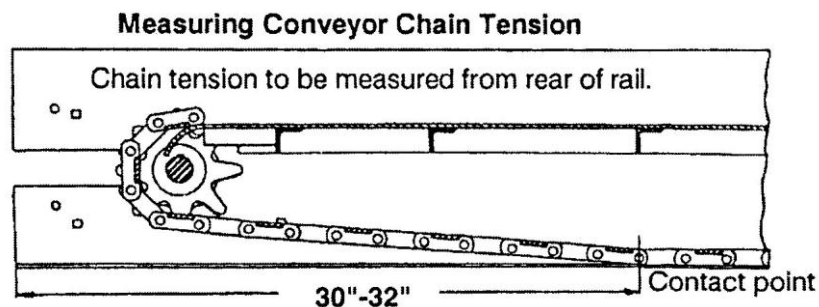
For Total Wide Spread
Adjust both left and right internal
baffles outward

Maintenance

- ❖ Use dielectric grease on all electrical connections at the beginning and end of each season, and as required during the season.
- ❖ Grease the idler bearings on the idler shaft, flanged bearings on the drag shaft, and spinner shaft bearings every 10 hours of operation.
- ❖ Grease the input shaft bearing on the gear case every 50 hours of operation.

NOTE: Over-greasing may cause seal damage. The gear case must be filled to the oil level plug with SAE 90 gear-type lubricant. Keep the breather plug clean.

- ❖ Check the conveyor chain slack periodically. Check the tension by measuring the distance between the end of the rear rail extension and the point where the chain contacts the lower flange on the rail. The correct distance for adjustment is 30" to 32". See the diagram below:



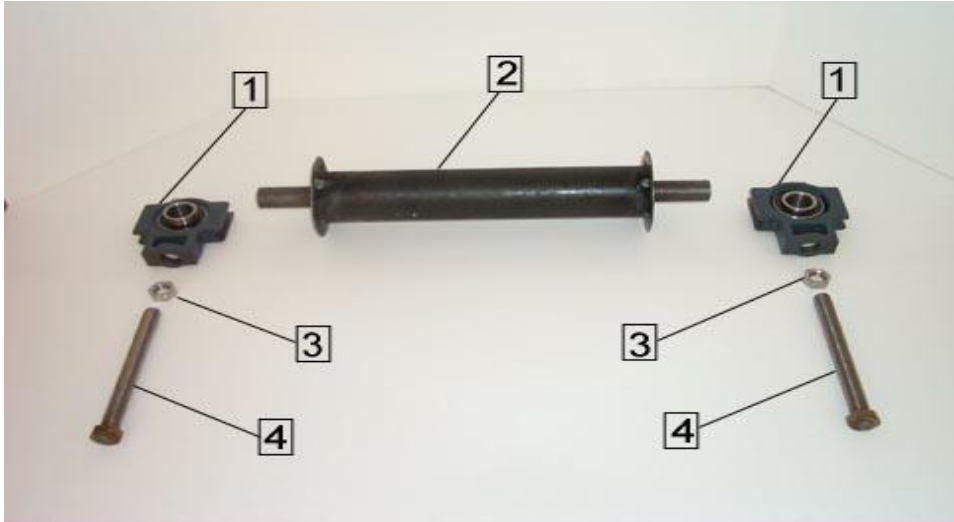
- ❖ Maintain engine-to-gear case roller chain tension. Correct chain tension allows 5/16" deflection midway between the sprockets. Oil this chain often, and the end of each season.
- ❖ Maintain spinner shaft-to-gear case roller chain tension. Correct chain tension allows 5/16" deflection midway between the sprockets. To increase chain tension, loosen the bearing mounting hardware and pull the spinner shaft away from the gear case. Make sure the spinner shaft is vertical and the sprockets are in line before retightening the fasteners. Oil this chain often, and the end of the season.
- ❖ **NOTE:** Over tightening the roller chains may damage the bearings on the gear case, the engine, and the spinner shaft. Over tightening will also shorten the life of the roller chain and sprockets.
- ❖ Empty the spreader when it is not in use to prevent a frozen conveyor chain.
- ❖ Wash out the spreader when it is not in use. At the end of the season, oil or paint all bare surfaces after washing and prior to storing the unit.
- ❖ To minimize problems and extend the life of the electric clutch, the following procedures are recommended:
 - At the end of each snow and ice season, remove and clean the clutch.
 - After cleaning the clutch, coat both mating surfaces of the clutch with oil or light grease.
 - Remove oil and grease prior to using the clutch again.

Engine Service and Repair

Maintain the spreader engine according to the engine owner's manual that is shipped with the spreader. Engine warranty is covered by Briggs & Stratton and is described in the back of the Briggs & Stratton engine owner's manual. If service or repair is needed, contact an authorized Briggs & Stratton Service Center. To serve you promptly, the Service Center will need the model, type, and code number for your engine. Your nearest Service Center is listed in the "Yellow Pages" under "Engine, Gasoline" or "Gasoline Engines".

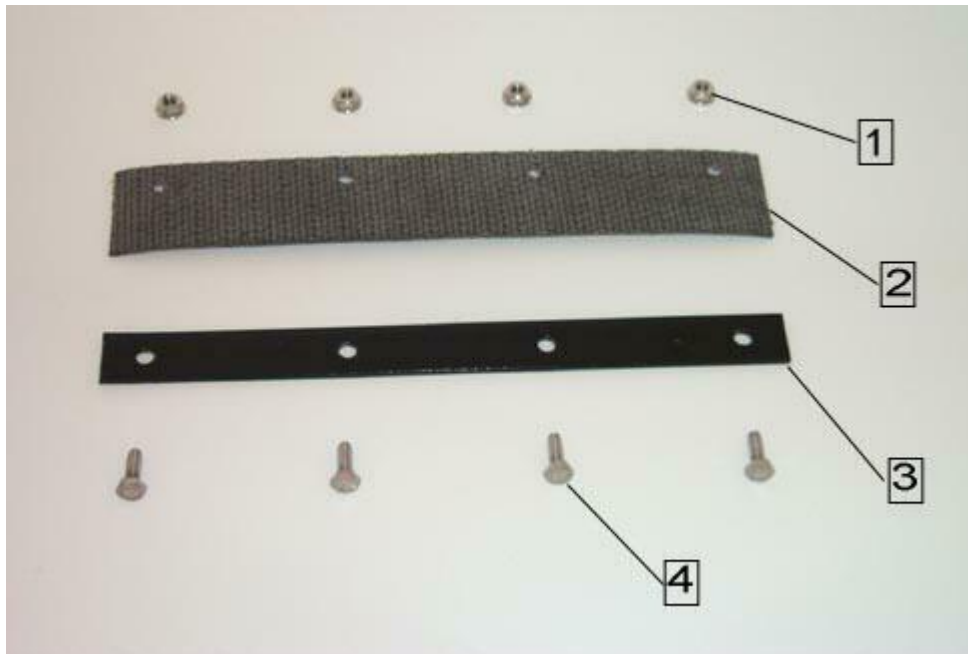


IDLER ROLLER ASSEMBLY



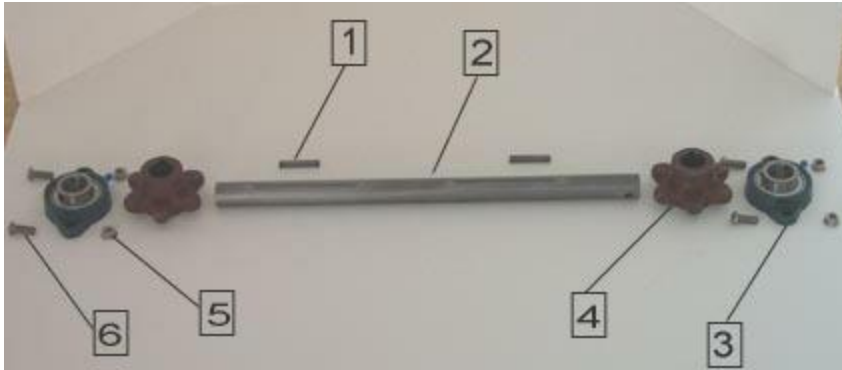
<u>ITEM</u>	<u>PART #</u>	<u>QTY.</u>	<u>DESCRIPTION</u>
	ICE1119-21		IDLER ROLLER ASSEMBLY
1	ICE2002	2	TAKE UP BEARING 1" BORE
2	ICE1009-21	1	FRONT IDLER ROLLER 21" LONG
3	ICE6008	2	5/8-11 JAM NUT
4	ICE4034	2	5/8-11 x 6 1/4 HEX HEAD BOLT

FRONT WIPER KIT



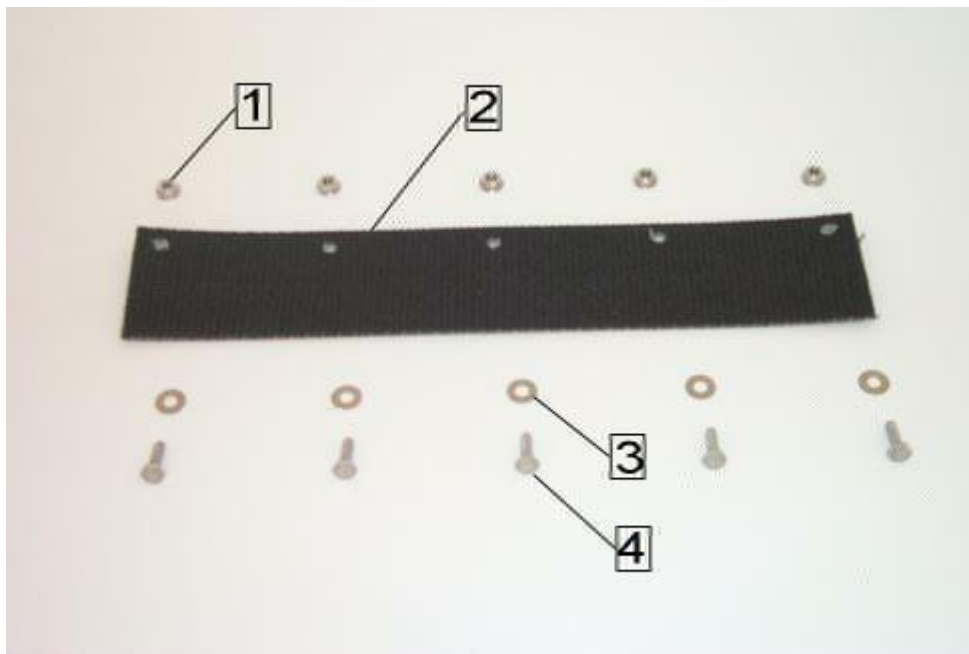
<u>ITEM</u>	<u>PART #</u>	<u>QTY.</u>	<u>DESCRIPTION</u>
	ICE1391		FRONT WIPER KIT
1	ICE6015	4	1/4-20 SERRATED FLANGE NUT
2	ICE1225	1	FRONT WIPER 3" x 12" FOR 7-10' UNITS
3	ICE1014	1	FRONT WIPER PLATE 1 x 11 3/4
4	ICE4026	4	1/4-20 x 3/4 HEX HEAD BOLT

DRIVE SHAFT ASSEMBLY



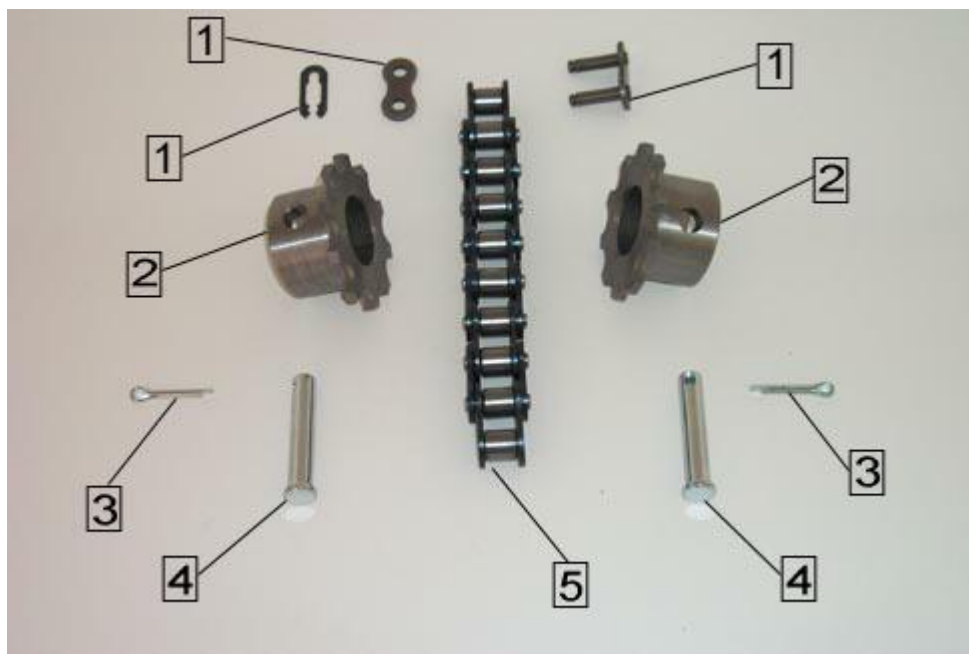
<u>ITEM</u>	<u>PART #</u>	<u>QTY.</u>	<u>DESCRIPTION</u>
	ICE1125-21		DRIVE SHAFT ASSEMBLY
1	ICE7003	2	1/4 x 1/4 x 2 KEY
2	ICE1041-21	1	DRIVE SHAFT 1 1/8" OD x 21"
3	ICE2001	2	FLANGE BEARING 1 1/8" BORE
4	ICE3002	2	6T SPROCKET CASTING 1 1/8" BORE
5	ICE6011	4	3/8-16 SERRATED FLANGE NUT
6	ICE4017	4	3/8-16 x 1 HEX HEAD SOCKET, BUTTON HEAD
7	ICE9011	1	3/8 X 2 CLEVIS PIN, ZINC PLATED & COTTER PIN
8	ICE3009	1	10T SPROCKET, 1-1/8" BORE (COUPLER CHAIN)
9	ICE4042	4	3/8-16 X 1-1/14 HEX HEAD CAP SCREW, SS
10	ICE6010	4	3/8-16 NYLON INSERT NUT, SS

REAR WIPER KIT



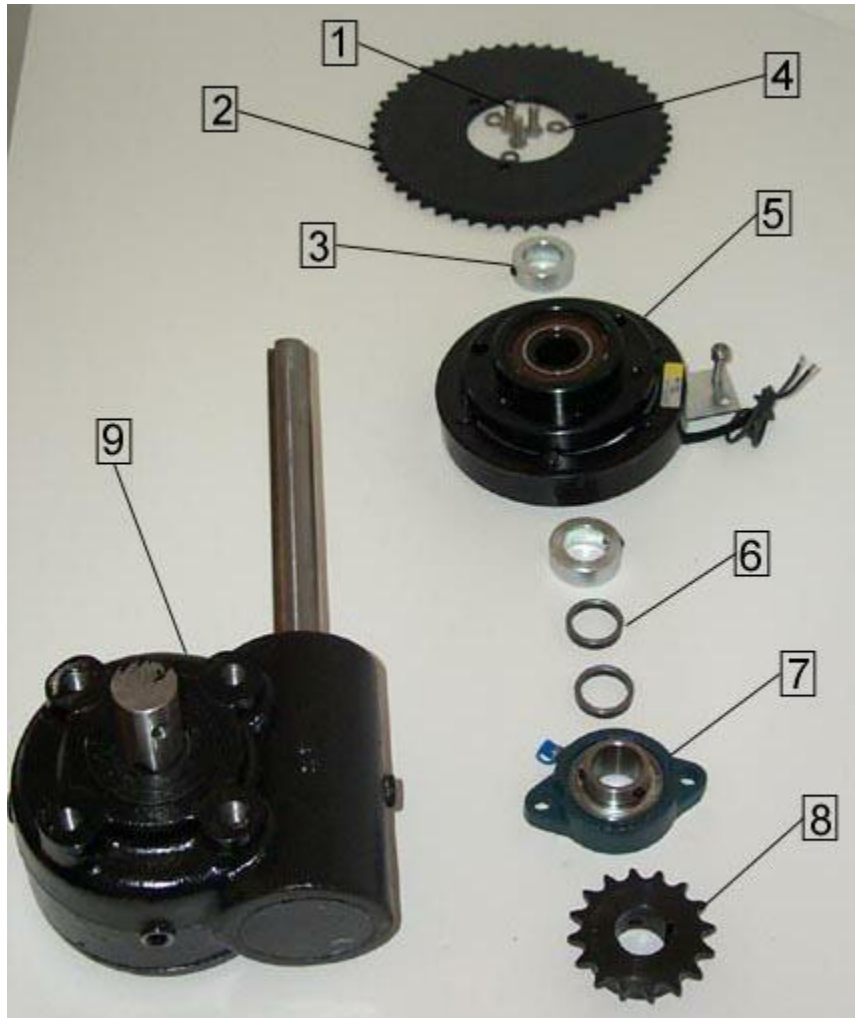
<u>ITEM</u>	<u>PART #</u>	<u>QTY.</u>	<u>DESCRIPTION</u>
	ICE1392		REAR WIPER KIT
1	ICE6015	5	1/4-20 SERRATED FLANGE NUT
2	ICE1019	1	REAR WIPER 3 x 15 5/8
3	ICE5012	5	1/4 SPLIT LOCK WASHER
4	ICE4025	5	1/4-20 x 3/4 HEX HEAD BOLT

CHAIN COUPLER ASSEMBLY



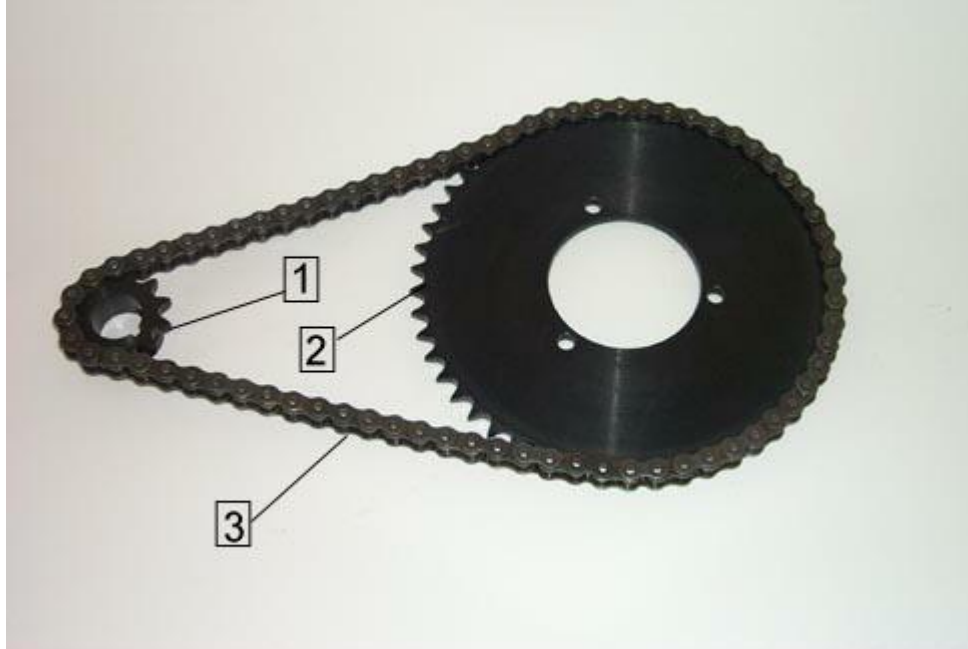
<u>ITEM</u>	<u>PART #</u>	<u>QTY.</u>	<u>DESCRIPTION</u>
	ICE1118		CHAIN COUPLER ASSEMBLY
1	ICE1138-60	1	CONNECTOR LINK #60 CHAIN
2	ICE3009	2	10T SPROCKET, 1 1/8" BORE
3	ICE9007	2	1/8 x 1 COTTER PIN
4	ICE9006	2	3/8 x 2 SHEAR PIN
5	ICE1219	1	#60 x 9 LINKS, COUPLER CHAIN

GEAR BOX & ELECTRIC CLUTCH ASSEMBLY



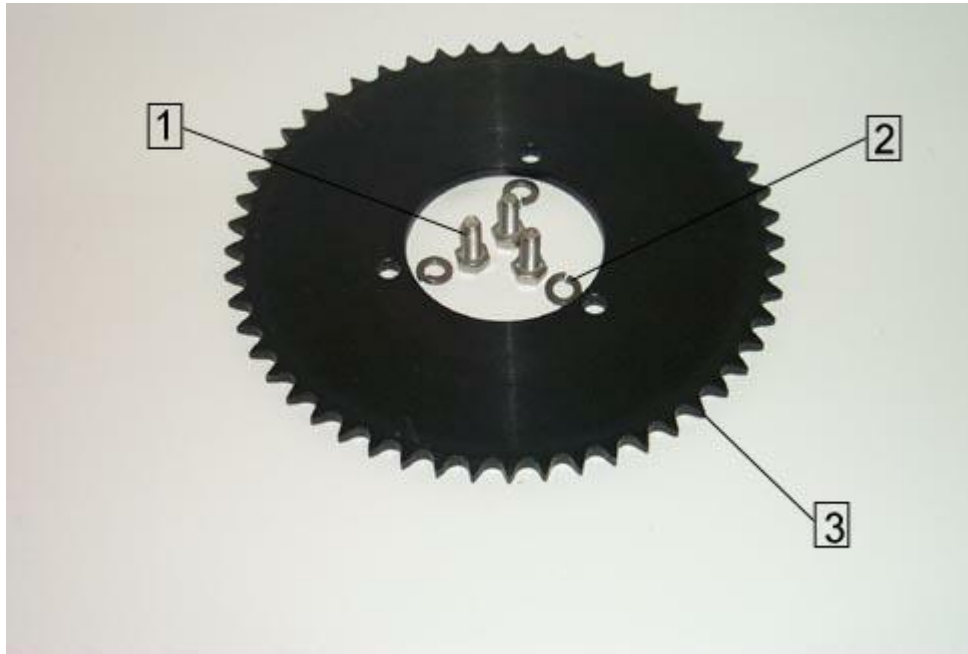
<u>ITEM</u>	<u>PART #</u>	<u>QTY.</u>	<u>DESCRIPTION</u>
	ICE1222		GEAR BOX & ELECTRIC CLUTCH ASSEMBLY
1	ICE4023	3	5/16-18 x 3/4 HEX HEAD BOLT
2	ICE3003	1	52T SPROCKET PLATE TYPE 1" BORE, CLUTCH
3	ICE1157	2	SHAFT COLLAR, 5/8" THICK x 1" ID
4	ICE5009	3	5/16 LOCK WASHER
5	ICE1062	1	ELECTRIC CLUTCH, 1" BORE
6	ICE1155	0	DISCONTINUED
7	ICE2000	1	FLANGE BEARING, 1" BORE, 2 BOLT
8	ICE3001	1	16T SPROCKET 1" BORE, GEAR BOX
9	ICE1039	1	GEAR BOX

ENGINE & CLUTCH SPROCKET CHAIN ASSEMBLY



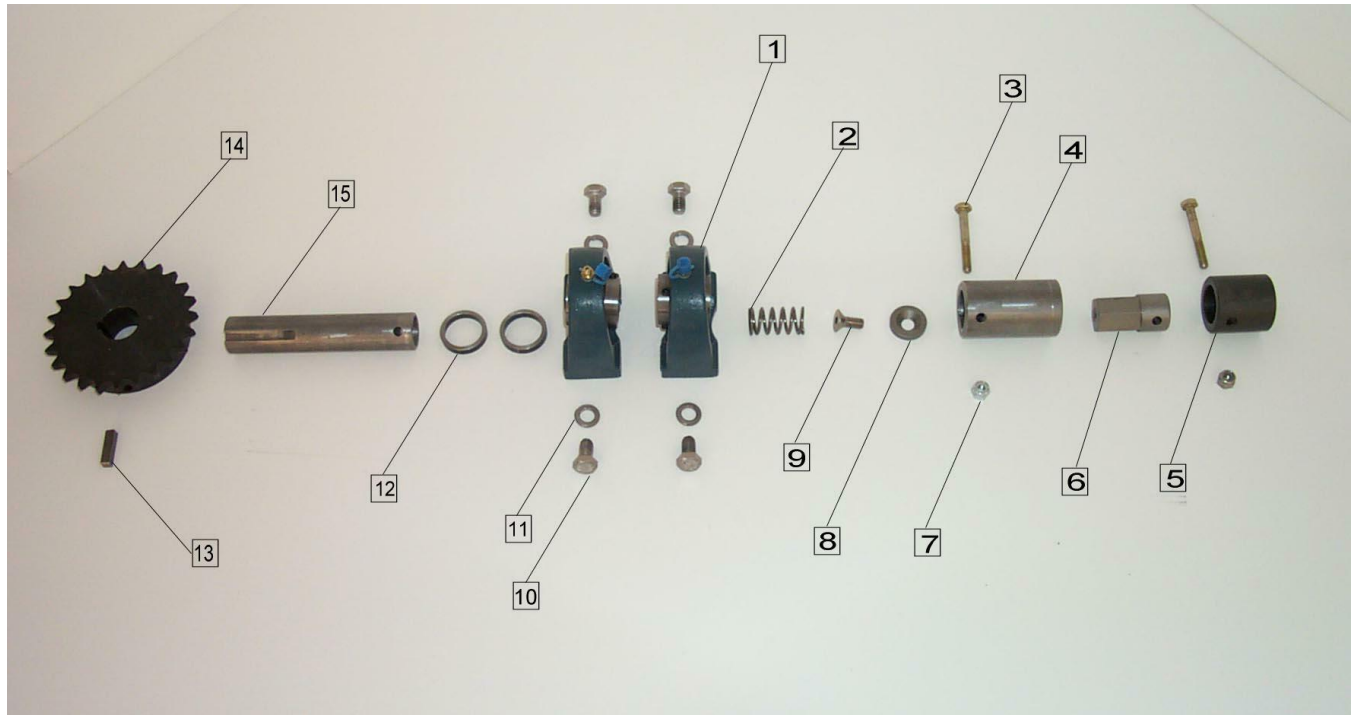
<u>ITEM</u>	<u>PART #</u>	<u>QTY.</u>	<u>DESCRIPTION</u>
	ICE1218		ENGINE & CLUTCH SPROCKET CHAIN ASSEMBLY
1	ICE3006	1	12T SPROCKET, 1" BORE, ENGINE SHAFT
2	ICE3003	1	52T SPROCKET PLATE TYPE 1" BORE, CLUTCH
3	ICE1126-39	1	#40 CHAIN x 39 LINKS, CLUTCH

ELECTRIC CLUTCH SPROCKET & HARDWARE



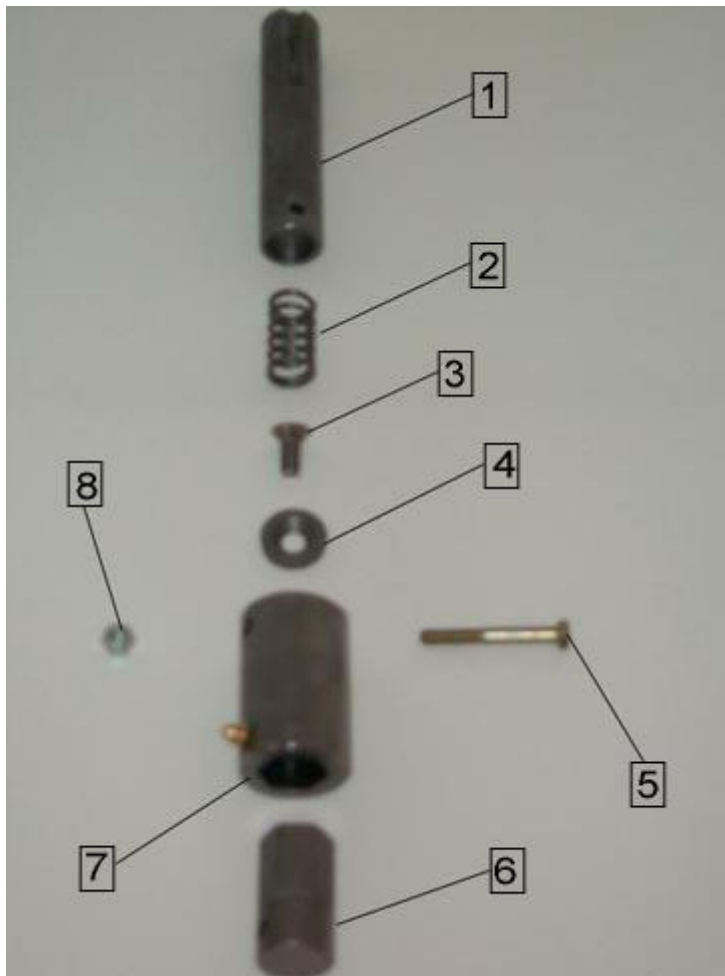
<u>ITEM</u>	<u>PART #</u>	<u>QTY.</u>	<u>DESCRIPTION</u>
	ICE3008		ELECTRIC CLUTCH SPROCKET & HARDWARE
1	ICE4023	3	5/16-18 x 3/4 HEX HEAD BOLT
2	ICE5009	3	5/16 LOCK WASHER
3	ICE3003	1	52T SPROCKET PLATE TYPE 1" BORE, CLUTCH

UPPER SPINNER SHAFT ASSEMBLY



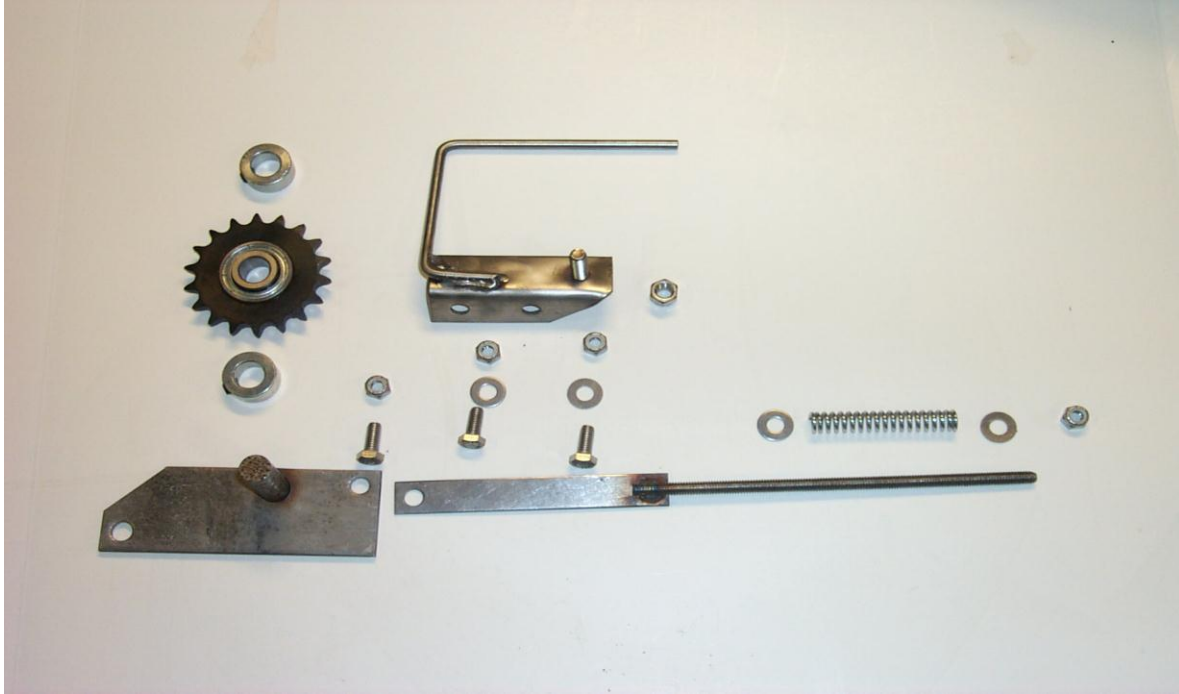
<u>ITEM</u>	<u>PART #</u>	<u>QTY.</u>	<u>DESCRIPTION</u>
	ICE1124		UPPER SPINNER SHAFT ASSEMBLY
1	ICE2004	2	PILLOW BLOCK BEARING 1" BORE TAPPED BASE
2	ICE1154	1	SPRING, UPPER SPINNER SHAFT
3	ICE4031	2	1/4-20" x 2" HEX HEAD CAP SCREW,ZP
4	ICE1220	1	HEX COUPLER
5	ICE1034-2	1	SPINNER SHAFT COUPLER FEMALE END
6	ICE1211	1	HEX SHAFT
7	ICE6016	2	1/4" NYLON INSERT NUT
8	ICE5011	1	COUNTER SUNK WASHER
9	ICE4013	1	5/16" x 3/4" FLAT HEAD HEX SOCKET BOLT
10	ICE4020	4	3/8-16" x 3/4" HEX HEAD CAP SCREW, SS
11	ICE5007	4	3/8" LOCK WASHER
13	ICE7001	1	KEY 1/4" x 1/4" x 1"
14	ICE3004	1	24T SPROCKET 1" BORE
15	ICE1117	1	UPPER SPINNER SHAFT 1" OD x 5 7/8" LONG

SPRING COUPLER SHAFT ASSEMBLY



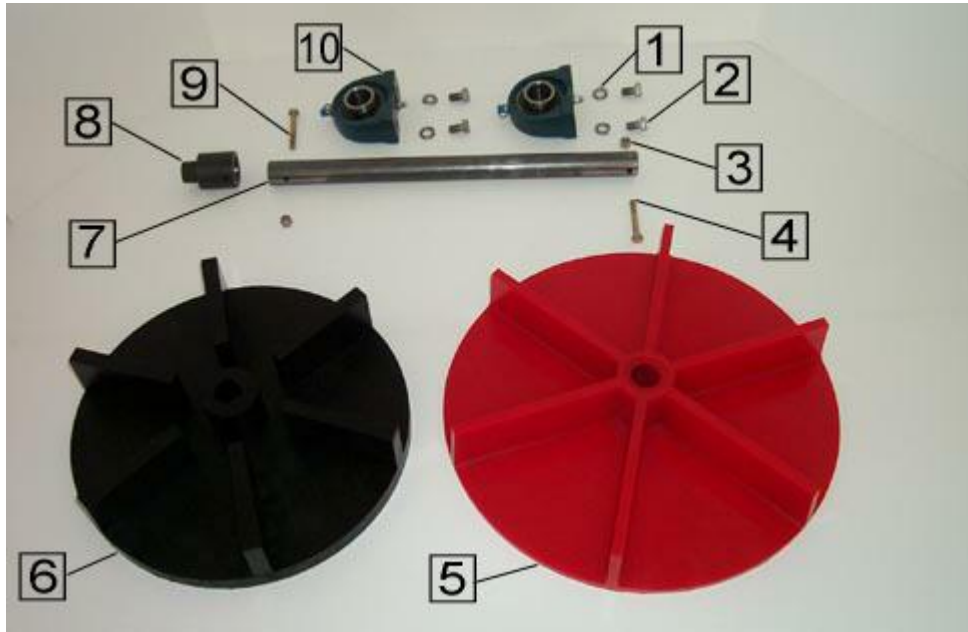
<u>ITEM</u>	<u>PART #</u>	<u>QTY.</u>	<u>DESCRIPTION</u>
	ICE1174		SPRING COUPLER SHAFT ASSEMBLY
1	ICE1117	1	UPPER SPINNER SHAFT 1" OD x 5 7/8"
2	ICE1154	1	SPRING, UPPER SPINNER SHAFT
3	ICE4013	1	5/16-18 x 3/4 FLAT HEAD HEX SOCKET BOLT
4	ICE5011	1	COUNTER SUNK WASHER
5	ICE4031	1	1/4-20 x 2 HEX HEAD CAP SCREW, ZP
6	ICE1211	1	HEX SHAFT
7	ICE1220	1	HEX COUPLER
8	ICE6016	1	1/4-20 NYLON INSERT NUT

IDLER ARM TAKE UP ASSEMBLY



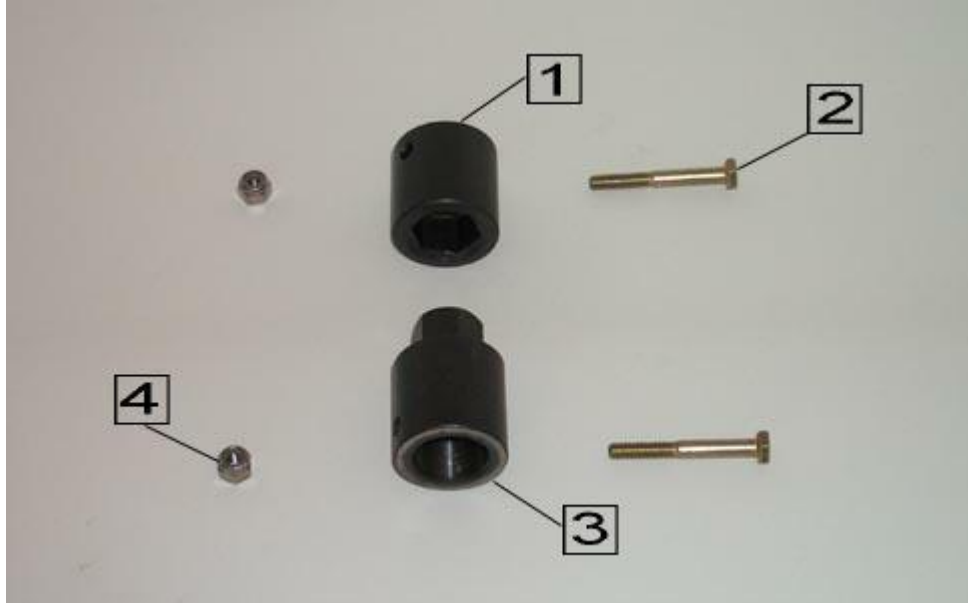
<u>ITEM</u>	<u>PART #</u>	<u>QTY.</u>	<u>DESCRIPTION</u>
	ICE1349		IDLER ARM TAKE UP ASSEMBLY
1	ICE1112	2	COLLAR, IDLER ARM 5/8" ID
2	ICE3007	1	18T SPROCKET, 5/8" ID
3	ICE6010	1	3/8" NYLON INSERT NUT
4	ICE1445	1	SPRING, 4" LONG SS
5	ICE6013	1	5/16" NYLON INSERT NUT
6	ICE5010	2	5/16" FLAT WASHER
7	ICE1446	1	IDLER ADJUSTING ROD 8-1/2" LONG
8	ICE1347	1	IDLER MOUNTING BRACKET
9	ICE5009	2	5/16" LOCK WASHER
10	ICE1345	1	IDLER PIVOT BRACKET

LOWER SPINNER SHAFT ASSEMBLY



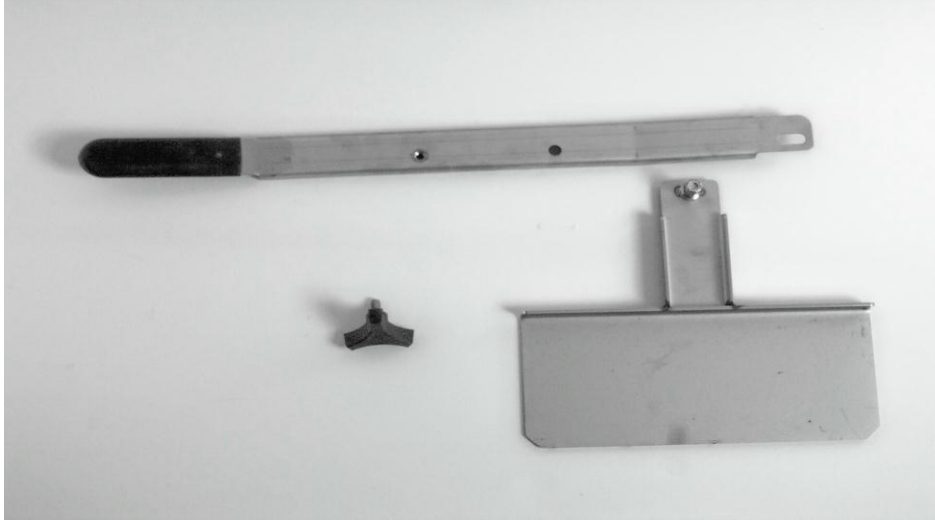
<u>ITEM</u>	<u>PART #</u>	<u>QTY.</u>	<u>DESCRIPTION</u>
	ICE1146		LOWER SPINNER SHAFT ASSEMBLY - STANDARD
	ICE1147		LOWER SPINNER SHAFT ASSEMBLY - LONG
1	ICE5007	4	3/8" LOCK WASHER
2	ICE4020	4	3/8-16 x 3/4 HEX HEAD CAP SCREW, SS
3	ICE6016	2	1/4-20 NYLON INSERT NUT
4	ICE4032	1	1/4-20 x 2 1/2 HEX HEAD BOLT
5	ICE1209	1	POLY SPINNER 14" FOR MODEL 8', 9' & 10'
6	ICE1148	1	POLY SPINNER 12" FOR MODEL 6 1/2'
7	ICE1035-15	1	STANDARD CHUTE SPINNER SHAFT 1" OD x 15 LONG
	ICE1036-27	1	LONG CHUTE SPINNER SHAFT 1" OD x 27 LONG
8	ICE1034-1	1	SPINNER SHAFT COUPLER MALE
9	ICE4067	1	1/4-20 x 2" L-9 HEX HEAD BOLT
10	ICE2004	2	PILLOW BLOCK BEARING 1" BORE TAPPED BASE

SPINNER SHAFT COUPLER ASSEMBLY



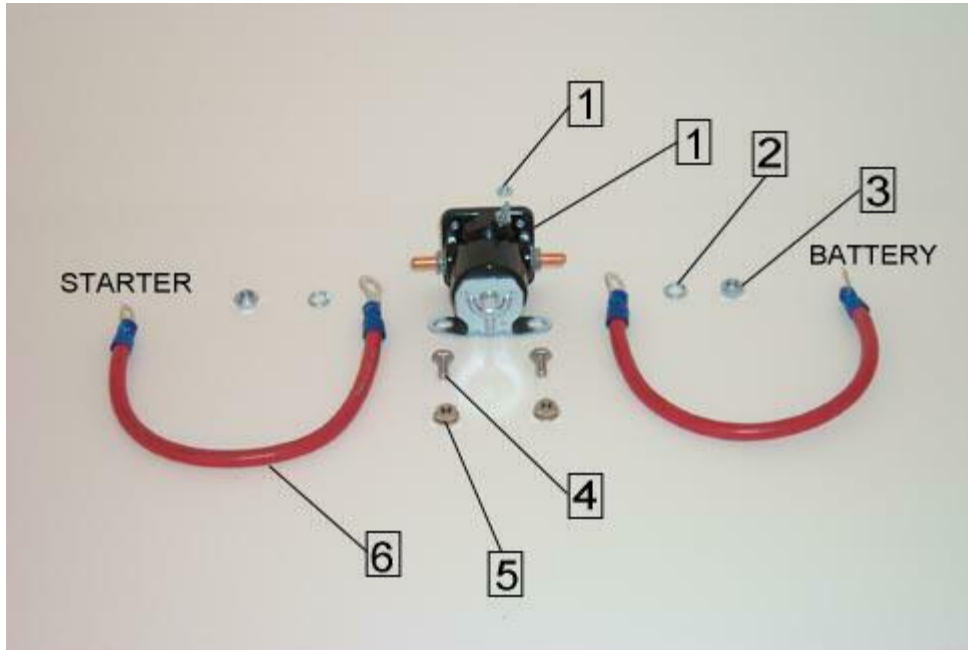
<u>ITEM</u>	<u>PART #</u>	<u>QTY.</u>	<u>DESCRIPTION</u>
	ICE1120		SPINNER SHAFT COUPLER ASSEMBLY
1	ICE1034-2	1	SPINNER SHAFT COUPLER FEMALE
2	ICE4031	2	1/4-20 x 2 HEX HEAD BOLT
3	ICE1034-1	1	SPINNER SHAFT COUPLER MALE
4	ICE6016	2	1/4-20 NYLON INSERT NUT

FEED GATE ASSEMBLY



<u>ITEM</u>	<u>PART #</u>	<u>QTY.</u>	<u>DESCRIPTION</u>
	ICE1151		FEED GATE ASSEMBLY
1	ICE1152	1	LEVER, FEED GATE
2	ICE4042	1	3/8-16 x 1 1/4 HEX CAP SCREW, SS
3	ICE6010	2	3/8-16 NYLON INSERT NUT
4	ICE1153	1	FEED GATE
5	ICE1018	1	KNOB, FEED GATE HANDLE
6	ICE5008	2	3/8" FLAT WASHER
7	ICE5018	1	1-3/8" FIBER WASHER, GATE HANDLE
8	ICE6011	1	3/8" x 16 SERRATED FLANGE NUT, SS

SOLENOID ASSEMBLY



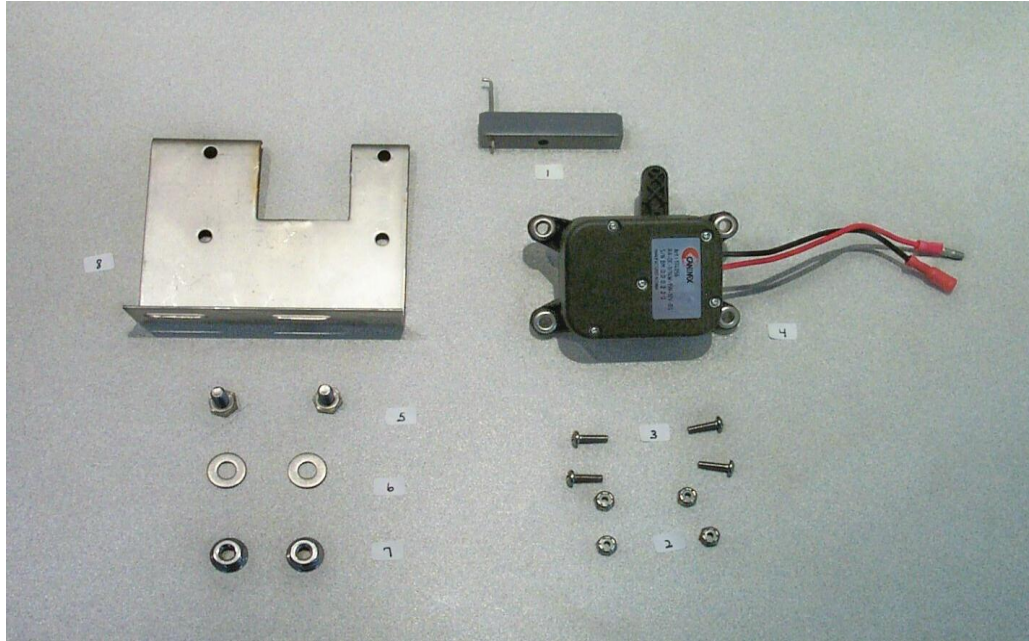
<u>ITEM</u>	<u>PART #</u>	<u>QTY.</u>	<u>DESCRIPTION</u>
	ICE1099		SOLENOID ASSEMBLY
1	ICE1100	1	SOLENOID W/HARDWARE
2	ICE5009	2	5/16 LOCK WASHER
3	ICE6014	2	5/16-18 THIN HEX HEAD
4	ICE4027	2	1/4-20 x 1/2 HEX HEAD BOLT
5	ICE6015	2	1/4-20 SERRATED FLANGE NUT
6	ICE1068	2	STARTER & BATTERY CABLE, RED 13 1/2" LONG

BATTERY MOUNTING BRACKET KIT



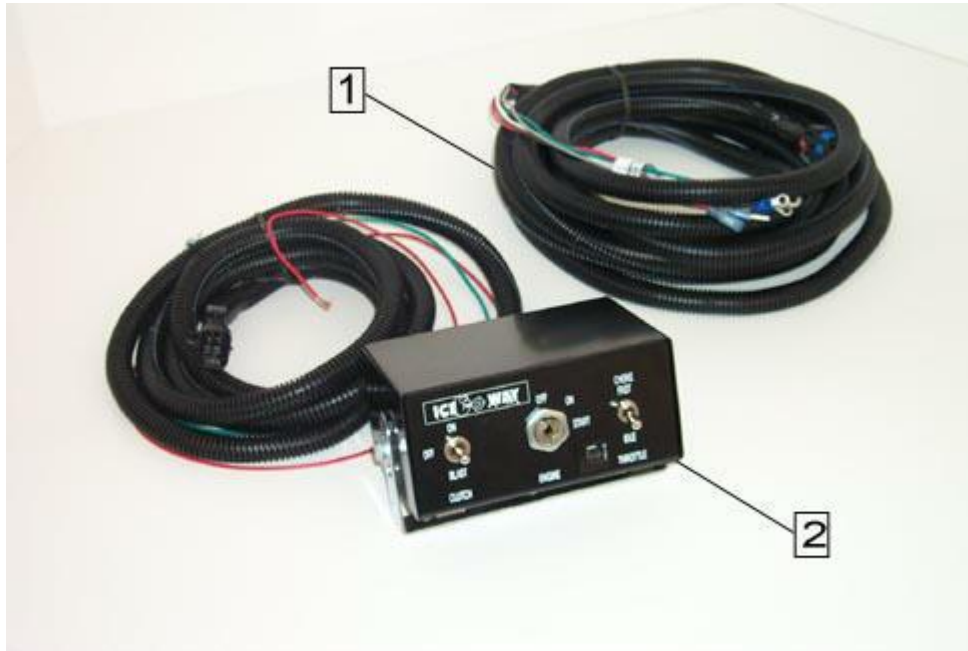
<u>ITEM</u>	<u>PART #</u>	<u>QTY.</u>	<u>DESCRIPTION</u>
	ICE1277		LARGE BATTERY MOUNTING BRACKET KIT
1	ICE1272SS	2	LARGE BATTERY BRACKET, SS
2	ICE4027	4	1/4-20 x 1/2 HEX HEAD BOLT
3	ICE6015	4	1/4-20 SERRATED FLANGE NUT

ELECTRIC THROTTLE MOUNTING KIT



<u>ITEM</u>	<u>PART #</u>	<u>QTY.</u>	<u>DESCRIPTION</u>
	ICE1396		ELECTRIC THROTTLE MOUNTING KIT. 11.5 H.P.
1	ICE1150	1	THROTTLE CONTROL BLOCK WITH PIN
2	ICE6019	4	6-32 NYLON INSERT NUT
3	ICE4033	4	6-32 x 1/2 ROUND HEAD PHILLIPS SCREW
4	ICE1394	1	THROTTLE MOTOR
5	ICE4026	2	1/4-20 x 3/4 HEX HEAD BOLT
7	ICE6015	2	1/4-20 SERRATED FLANGE NUT
8	ICE1395	1	BRACKET, ELECTRIC THROTTLE

CONTROL PANEL KIT



<u>ITEM</u>	<u>PART #</u>	<u>QTY.</u>	<u>DESCRIPTION</u>
	ICE1114		CONTROL PANEL KIT
1	ICE1116	1	WIRE HARNESS, HOPPER
2	ICE1115	1	CONTROL PANEL W/CAB WIRE HARNESS



ICE1045-07
CONVEYOR CHAIN FOR 7'

ICE1045-08
CONVEYOR CHAIN FOR 8'

ICE1045-09
CONVEYOR CHAIN FOR 9'

ICE1045-10
CONVEYOR CHAIN FOR 10'



ICE1098-07
H.D. TOP SCREEN FOR 7'

ICE1098-08
H.D. TOP SCREEN FOR 8'

ICE1098-09
H.D. TOP SCREEN FOR 9'

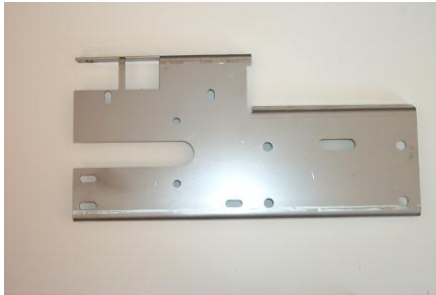
ICE1098-10
H.D. TOP SCREEN FOR 10'



ICE1282SS
DECK PLATE
STAINLESS STEEL



ICE1160SS
SILL EXTENSION LEFT
STAINLESS STEEL



ICE1161SS
SILL EXTENSION RIGHT
STAINLESS STEEL



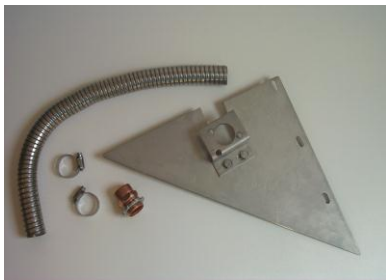
ICE1305SS
BASKET STAINLESS STEEL



ICE1279SS
CHUTE, LEFT HAND BAFFLE,
STAINLESS STEEL



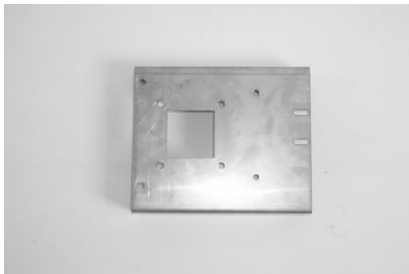
ICE1280SS
CHUTE, RIGHT HAND BAFFLE,
STAINLESS STEEL



ICE1290SS
MUFFLER CONSERVATION KIT,
STAINLESS STEEL



ICE1276
LARGE 12V BATTERY



ICE1284
MOTOR STAND



ICE1337
11.5 HP BRIGGS & STRATTON ENGINE

ICE1338
11.5 HP BRIGGS & STRATTON ENGINE
COMPLETE ASSEMBLY

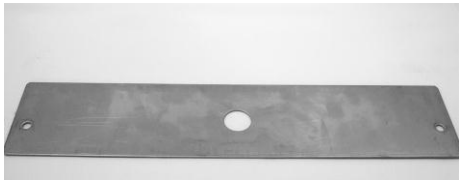


ICE1293SS
CHUTE EXTENSION KIT STAINLESS STEEL

ICE1266SS
CHUTE EXTENSION HOUSING STAINLESS STEEL



ICE1241SS
UPPER SPINNER SHAFT BRACKET
STAINLESS STEEL



ICE1233SS
GUARD, 3 ½ x 16, UPPER SPINNER SHAFT
STAINLESS STEEL



ICE1281SS-L

CHUTE, LEFT HAND INNER DEFLECTOR,
STAINLESS STEEL

ICE1304 CHUTE DEFLECTOR SPRING
ICE9010 BOW TIE COTTER PIN
ICE5008 3/8" FLAT WASHER SS



ICE1281SS-R

CHUTE, RIGHT HAND DEFLECTOR,
STAINLESS STEEL

ICE1304 CHUTE DEFLECTOR SPRING
ICE9010 BOW TIE COTTER PIN
ICE5008 3/8" FLAT WASHER SS



ICE1265SS

CHUTE BODY, STAINLESS STEEL



ICE1344SS

LONG CHUTE ASSEMBLY STAINLESS STEEL



ICE1341SS
CHUTE BODY/W BAFFLES & DEFLECTORS
STAINLESS STEEL



ICE1303SS
CHUTE ASSEMBLY STAINLESS STEEL



ICE9011
CLEVIS PIN, ZINC PLATED

ICE9007
1/8" X 1" COTTER PIN, ZINC PLATED



ICE1229
LATCH CHUTE



ICE1105
CONTROL ROD 6 5/8"

ICE1106
CONTROL ROD 10 5/8"



ICE1126-39
CHAIN CLUTCH #40 x 39 LINKS

ICE1126-41
CHAIN SPINNER #40 x 41 LINKS



ICE1097-18
CHAIN, STANDARD CHUTE 18 LINKS

ICE1097-13
CHAIN LONG CHUTE 13 LINKS



ICE1240
RUBBER STRAP HOOD KIT



ICE1308SS
ENGINE BASE TRIANGLE GUARD
STAINLESS STEEL



ICE1283SS
ENGINE HOOD STAINLESS STEEL



ICE1175
TOGGLE SWITCH CLUTCH



ICE1176
TOGGLE SWITCH THROTTLE



ICE1177
IGNITION SWITCH



ICE1178
FUSE 10 AMP BREAKER